



*– Two Thousand Twenty-Two –*



# KEEPING THE DRIVE ALIVE

---

The connection to life on the water has been strong in my family for generations. Each year, as I continue that tradition and watch the passion permeate into the lives of my children and close family I feel extremely grateful. This year in particular, amongst challenging times we've been lucky enough to spend time with each other on the waterways in my backyard here in Central Florida with the intention to create memories that all of us will cherish. That intention is what keeps myself and my team in the constant pursuit of creating products that our customers will gravitate towards. Our mission is to spread that passion for life on the water with all of our customers as they set their sights on summer aboard a Nautique.

Along with my own experiences, I've had a first-hand look at the amazing impact that our products make on families at the Nautique Regattas this year. Connecting with our owners at these events has been one of the most rewarding parts of my career, as I get to interact and catch an inside look at all of the things that they love about their Nautiques.

There has been a specific drive that our owners have had over the past year that has been remarkable to witness. Families spending more time together than ever before and bonding on the water has been a refreshing byproduct of the times we've encountered. That drive to enjoy summer and spend time with family and close friends has created one of the most exciting times in our industry. With demand for our products stronger than ever, our focus is even more urgent to deliver innovative products that enhance the ownership experience and embrace new boaters that have found their passion in life aboard a Nautique.

I'm thrilled to present our new offerings in 2022, with the GS-Series and the G-Series both getting beautiful, all-new towers that provide even more convenience both on and off the water. The LINC Panoray Touchscreen getting a new interface on our Super Air Nautiques, and the Supplemental Ballast option now available on additional models also allows for a more user-friendly experience once you're out on the boat. Whatever size family you have, activity you enjoy or comfort level you prefer, there is a Nautique that is ready to drive your summer fun.



Greg Meloon - President  
Nautique Boat Company

***"So be strong and courageous, all  
you who put hope in the Lord..."***  
-Psalm 31:24































# YOUR NAUTIQUE, OUR PROMISE

---

## 5-YEAR, 1k-HOUR WARRANTY

There's a higher level of comfort when you purchase a new Nautique thanks to our 5-Year Transferable Warranty\*. Over the course of our 96-year history we have built a reputation on creating trust and loyalty with our owners by always having their back. We want you to have the best ownership experience possible, that's why we go to great lengths to make certain you are enjoying your Nautique precisely the way it was designed.

\*Nautique warrants to the original owner or user, that each new 2022 Nautique boat, as originally manufactured by Nautique, shall under normal authorized use be free of defect in material and workmanship for a period of five (5) years or 1,000 hours from the date of delivery (whichever comes first). This warranty applies to factory-installed components including boat parts, options or other components not manufactured by Nautique Boat Company and is transferable one-time only to the second owner.









# OWNERSHIP GLISTENING WITH HONORS

---

## AN AWARD-WINNING TEAM

When you purchase a Nautique, it comes with the pride of knowing you are a part of an award-winning team. Each year, Nautique continues to dominate the towboat market with our innovative products that keep our customers concentrated on what they should be: having fun on the water. Whether it be the Favorite Boat Brand of the readers of Wakeboarding Magazine, Boating Industry's Top Product or winning NMMA's CSI Award in customer satisfaction for the 15th year in a row, our team's accolades are a testament to the high-caliber of every Nautique that rolls off our factory floor.









# THE ALL-NEW FLIGHT CONTROL TOWERS

---

## THE PERFECT TOW POINT

New for 2022, there are all-new tower options for our G-Series and GS-Series boats. Each model comes standard with our completely re-designed Flight Control Tower® that provides the perfect tow point for wakeboarding or wakesurfing and manually folds down for easy storage, or for traveling under bridges. There's also an Actuated Flight Control Tower version, which folds up or down at the touch of a button. For the 2022 G-Series, we are proud to offer the Telescoping Flight Control Tower package. This allows you to quickly and easily telescope the tower up or down with the bimini remaining in place, and everyone sitting comfortably in their seats and includes Nautique Strapless Board Racks, Bimini Top with Surf Pockets and two pairs of 8.8" JL Audio speakers enclosed in custom speaker housings.







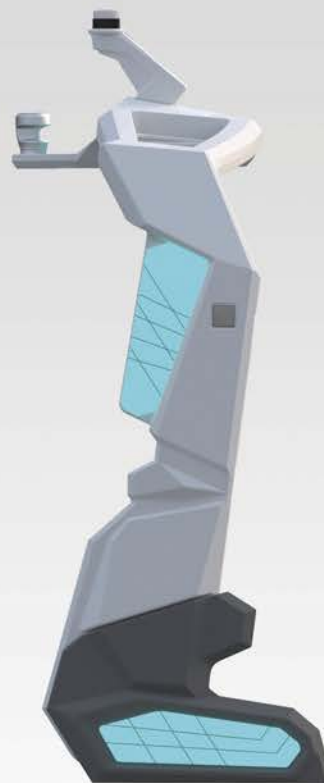
**FLIGHT CONTROL TOWER  
MANUAL**

*Available on:*  
**GS24 | GS22 | GS22E | GS20**



**FLIGHT CONTROL TOWER  
ACTUATED**

*Available on:*  
**GS24 | GS22 | GS22E | GS20**



**FLIGHT CONTROL TOWER  
MANUAL OR ACTUATED**

*Available on:*  
**G25 | G23 | G21 | S23**



**FLIGHT CONTROL TOWER  
TELESCOPING**

*Available on:*  
**G25 | G23 | G21 | S23**



# EXPERIENCE OUR ENDLESS WAVES

---

## NAUTIQUE SURF SYSTEM®

Find your passion for surfing by riding endless waves thanks to our award-winning Nautique Surf System (NSS). With the advanced technology found aboard all Super Air Nautiques, the Nautique Surf System shapes long, perfectly formed waves at the touch of a button. The fun that comes with surfing endless waves all summer long with your friends has a lasting impression on everyone that gets behind the boat, and the feeling of throwing the rope back to the boat and standing in the pocket for the first time is one that will stay with you forever.









# QUALITY CRAFTSMANSHIP AT ANY COST

---

## REPUTATION OF A NAUTIQUE

Our team takes extreme pride in the products we produce at our world headquarters in Orlando, Florida. That's why we've developed a renowned reputation for creating the highest-quality towboats in the world. We only incorporate the most durable, high-grade and luxurious materials available so that your Nautique will withstand the elements and provide your family with years of enjoyment. Every model that rolls off our factory floor includes a dedication to quality that you will only get out of Nautique.







# SUPER AIR NAUTIQUE SERIES

G25P | G23P | G25 | G23 | G21 | S23 | GS24 | GS22 | GS22E | GS20

---

## A STEP ABOVE

With a celebrated legacy, the Super Air Nautique badge is synonymous with progression at every level. From world-class wakes and surf waves to a higher echelon of luxury and quality, once you have stepped aboard a Super Air Nautique there is no comparison. With a wide-range of models that have something to offer every watersports-loving family, the 2022 line of Super Air Nautiques is ready for you to experience the best summer ever.









## G25P



### LENGTH

25' (7.62 m)

### DRAFT

32.2" (0.82 m)

### DRY WEIGHT

7,400 lbs (3,356 kg)

### HORSEPOWER

600

### MAX CAPACITY

19 People / 2,800 lbs (1,270 kg)

### BEAM

102" (2.59 m)

### FUEL CAPACITY

88 gal (333.1 l)

### MAX FACTORY BALLAST

2,200 lbs (998 kg)

## G23P



### LENGTH

23' (7.01 m)

### DRAFT

31.5" (0.80 m)

### DRY WEIGHT

7,200 lbs (3,266 kg)

### HORSEPOWER

600

### MAX CAPACITY

16 People / 2,500 lbs (1,134 kg)

### BEAM

102" (2.59 m)

### FUEL CAPACITY

65 gal (248.1 l)

### MAX FACTORY BALLAST

2,200 lbs (998 kg)

## G25



### LENGTH

25' (7.62 m)

### DRAFT

31" (0.79 m)

### DRY WEIGHT

6,400 lbs (2,903 kg)

### HORSEPOWER

450 / 475 / 600 / **370**

### MAX CAPACITY

19 People / 2,800 lbs (1,270 kg)

### BEAM

102" (2.59 m)

### FUEL CAPACITY

88 gal (333.1 l)

### MAX FACTORY BALLAST

3,650 lbs (1,656 kg)

## G23



### LENGTH

23' (7.01 m)

### DRAFT

31" (0.79 m)

### DRY WEIGHT

6,000 lbs (2,722 kg)

### HORSEPOWER

450 / 475 / 600 / **370**

### MAX CAPACITY

16 People / 2,500 lbs (1,134 kg)

### BEAM

102" (2.59 m)

### FUEL CAPACITY

65.6 gal (248.2 l)

### MAX FACTORY BALLAST

3,650 lbs (1,656 kg)

## G21



### LENGTH

21' 6" (6.55 m)

### DRAFT

31.25" (0.79 m)

### DRY WEIGHT

5,800 lbs (2,631 kg)

### HORSEPOWER

450 / 475 / 600 / **370**

### MAX CAPACITY

14 People / 2,200 lbs (998 kg)

### BEAM

102" (2.59 m)

### FUEL CAPACITY

46.5 gal (176 l)

### MAX FACTORY BALLAST

2,250 lbs (1,021 kg)



## S23



### LENGTH

23' (7.01 m)

### DRAFT

31.25" (0.79 m)

### DRY WEIGHT

5,500 lbs (2,540 kg)

### HORSEPOWER

400 / 355 / 450 / 475 / 600

### MAX CAPACITY

16 People / 2,300 lbs (1,043 kg)

### BEAM

100" (2.54 m)

### FUEL CAPACITY

65.1 gal (246.4 l)

### MAX FACTORY BALLAST

3,150 lbs (1,429 kg)

## GS24



### LENGTH

24' (7.31 m)

### DRAFT

29.25" (0.74 m)

### DRY WEIGHT

5,100 lbs (2,313 kg)

### HORSEPOWER

400 / 355 / 450 / 475

### MAX CAPACITY

17 People / 2,650 lbs (1,202 kg)

### BEAM

100" (2.54 m)

### FUEL CAPACITY

68 gal (257.4 l)

### MAX FACTORY BALLAST

3,200 lbs (1,202 kg)

## GS22



### LENGTH

22' (6.70 m)

### DRAFT

27.6" (0.70 m)

### DRY WEIGHT

4,750 lbs (2,155 kg)

### HORSEPOWER

400 / 355 / 450

### MAX CAPACITY

15 People / 2,200 lbs (998 kg)

### BEAM

100" (2.54 m)

### FUEL CAPACITY

51 gal (193 l)

### MAX FACTORY BALLAST

2,950 lbs (1,338 kg)

## GS22E



### LENGTH

22' (6.70 m)

### DRAFT

27" (0.69 m)

### DRY WEIGHT

5,900 lbs (2,976 kg)

### MAX CAPACITY

11 People / 1,500 lbs (680 kg)

### BEAM

100" (2.54 m)

### MAX FACTORY BALLAST

1,850 lbs (839 kg)

### CHARGE TIME

AC: 10 hours at 240V / 50A  
DC: 4 hours at 25 kw  
SUPERCHARGER: 1.5 hours at 80 kw

### WATERSPORTS USE TIME

2-3 hours

## GS20



### LENGTH

20' (6.10 m)

### DRAFT

27" (0.69 m)

### DRY WEIGHT

4,500 lbs (2,041 kg)

### HORSEPOWER

400 / 355 / 450

### MAX CAPACITY

12 People / 1,850 lbs (839 kg)

### BEAM

100" (2.54 m)

### FUEL CAPACITY

39 gal (147.6 l)

### MAX FACTORY BALLAST

1,850 lbs (839 kg)

SUPER AIR NAUTIQUE BOAT SPECIFICATIONS

PEAK PERFECTION





# G25 PARAGON

## SUPER AIR NAUTIQUE

With world-class performance, refined finishes and a stunning presence, the G25 Paragon is the highest-level wake boat imaginable. At 25-feet, this boat takes every element to the next level. A configurable wrap-around lounge that converts into the perfect viewing area for all of the action, the G25 Paragon also provides the ultimate wake and wave for every rider or surfer. While the state-of-the-art helm boasts our Dual LINC Panoray Displays, the Telescoping Flight Control tower adds another element that makes the Super Air Nautique G25 Paragon the peak of wake boat perfection.

**LENGTH**

25' (7.62 m)

**DRAFT**

32.2" (0.82 m)

**DRY WEIGHT**

7,400 lbs (3,356 kg)

**HORSEPOWER**

600

**MAX CAPACITY**

19 People / 2,800 lbs. (1,270 kg)

**BEAM**

102" (2.59 m)

**FUEL CAPACITY**

88 gal (333.1 l)

**MAX FACTORY BALLAST**

2,200 lbs (998 kg)

\*Dry weight represents a boat equipped with all factory installed options, minus fuel.













THE NEXT ECHELON





# G23 PARAGON

## SUPER AIR NAUTIQUE

The pinnacle of all wake boats, the award-winning G23 Paragon takes luxury and performance to another echelon with features and amenities that can't be found on any other model. The most innovative hull design on the market, the G23 Paragon serves up the very best wakesurf waves and wakeboard wakes and are completely configurable to any rider's needs. Pair that innovation with the highest-level of luxury imaginable, and there is little doubt that the G23 Paragon is a one-of-a-kind wake boat suited for the most discerning enthusiast.

**LENGTH**

23' (7.01 m)

**DRAFT**

31.5" (0.8 m)

**DRY WEIGHT**

7,200 lbs (3,266 kg)

**HORSEPOWER**

600

**MAX CAPACITY**

16 People / 2,500 lbs (1,134 kg)

**BEAM**

102" (2.59 m)

**FUEL CAPACITY**

65 gal (248.1 l)

**MAX FACTORY BALLAST**

2,200 lbs (998 kg)

\*Dry weight represents a boat equipped with all factory installed options, minus fuel.













BEYOND IMAGINATION





# G25

## SUPER AIR NAUTIQUE

Optimized for large crews that desire unwavering performance, the Super Air Nautique G25 is the largest offering in the Nautique line up. With room for up to 19 people, the G25 has a ton of space for family, friends and gear and also produces some of the best wakesurf waves and wakeboard wakes in the industry. Add that to the host of amenities, high-end touches and a striking aesthetic and the G25 overdelivers on what a wake boat can provide. With new tower options for 2022, the G25 is ready to stand out on the water wherever you take it.

**LENGTH**

25' (7.62 m)

**DRAFT**

31" (0.79 m)

**DRY WEIGHT**

6,400 lbs (2,903 kg)

**HORSEPOWER**

450 / 475 / 600 / **370**

**MAX CAPACITY**

19 People / 2,800 lbs (1,270 kg)

**BEAM**

102" (2.59 m)

**FUEL CAPACITY**

88 gal (331.1 l)

**MAX FACTORY BALLAST**

3,650 lbs (1,656 kg)

\*Dry weight represents a boat equipped with all factory installed options, minus fuel.













BREATHTAKING FORM





# G23

## SUPER AIR NAUTIQUE

A continuation of the best wake boat of all time, the G23 stays true to its mission in 2022 by outperforming anything else on the market while offering the luxury and quality you've come to expect. With new tower options, the G23 takes on a new look and adds functionality while still delivering the configurable surf waves and wakeboard wakes suited for every age and skill level. Pair that with luxurious amenities, a versatile interior layout and stunning lines and the Super Air Nautique G23 continues to reign supreme as the best modern-day wake boat in existence.

**LENGTH**

23' (7.01 m)

**DRAFT**

31" (0.79 m)

**DRY WEIGHT**

6,000 lbs (2,722 kg)

**HORSEPOWER**

450 / 475 / 600 / **370**

**MAX CAPACITY**

16 People / 2,500 lbs (1,134 kg)

**BEAM**

102" (2.59 m)

**FUEL CAPACITY**

65.6 gal (248.2 l)

**MAX FACTORY BALLAST**

3,650 lbs (1,656 kg)

\*Dry weight represents a boat equipped with all factory installed options, minus fuel.



SUPER AIR NAUTIQUE G23











PINNACLE OF EXCELLENCE





# G21

## SUPER AIR NAUTIQUE

For the best possible wake boat in the 21-foot size class, look no further than the Super Air Nautique G21. As a towboat that prides itself on serving up astonishing wakes and surf waves, the G21 delivers on the high-pedigree of performance you expect from a G-Series and brings it into a 21-foot package. With a luxurious helm design and lounge area for all your passengers, the G21 strikes the perfect balance of luxury and performance to give you and your crew the ultimate surf and wakeboard boat all summer long.

**LENGTH**

21' 6" (6.55 m)

**DRAFT**

31.25" (0.79 m)

**DRY WEIGHT**

5,800 lbs (2,631 kg)

**HORSEPOWER**

450 / 475 / 600 / **370**

**MAX CAPACITY**

14 People / 2,200 lbs (998 kg)

**BEAM**

102" (2.59 m)

**FUEL CAPACITY**

46.5 gal (176 l)

**MAX FACTORY BALLAST**

2,250 lbs (1,021 kg)

\*Dry weight represents a boat equipped with all factory installed options, minus fuel.



SUPER AIR NAUTIQUE G21











MODERN LOOK, ICONIC DNA





# S23

## SUPER AIR NAUTIQUE

Brand-new for 2022, the Super Air Nautique S23 is an ultra-modern take on the traditional bow Nautique. The S23 offers an aggressive new hull design that delivers unrelenting performance unlike anything else in its class. From the interior to the exterior, the elegant lines and smart design add a level of luxury and intuitiveness that is unmatched. Adding functionality while providing our proven, world-class surf waves and wakeboard wakes, this first iteration of the brand-new Super Air Nautique S-Series gives a subtle nod to the past while looking boldly into the future.

**LENGTH**

23' (7.01 m)

**DRAFT**

31.25" (0.79 m)

**DRY WEIGHT**

5,500 lbs (2,540 kg)

**HORSEPOWER**

400 / 355 / 450 / 475 / 600

**MAX CAPACITY**

16 People / 2,300 lbs (1,043 kg)

**BEAM**

100" (2.54 m)

**FUEL CAPACITY**

65.1 gal (246.4 l)

**MAX FACTORY BALLAST**

3,150 lbs (1,429 kg)

\*Dry weight represents a boat equipped with all factory installed options, minus fuel.



SUPER AIR NAUTIQUE S23











READY FOR ANYTHING





# GS24

## SUPER AIR NAUTIQUE

Providing massive interior space for friends, family and gear, the GS24 is the largest multi-sport towboat in the Nautique line. At 24-feet, this beautifully appointed waterski, wakesurf and wakeboard boat can outperform any other multi-sport boat in its class, delivering incredible performance at the touch of a button. Want to please anyone who comes aboard? The GS24 can do just that with its 2,500 pounds of integrated internal ballast, Ski Assist feature and hull characteristics for incomparable wakes and waves for every activity.

**LENGTH**

24' (7.31 m)

**DRAFT**

29.25" (0.74 m)

**DRY WEIGHT**

5,100 lbs (2,313 kg)

**HORSEPOWER**

400 / 355 / 450 / 475

**MAX CAPACITY**

17 People / 2,650 lbs (1,202 kg)

**BEAM**

100" (2.54 m)

**FUEL CAPACITY**

68 gal (257.4 l)

**MAX FACTORY BALLAST**

3,200 lbs (1,202 kg)

\*Dry weight represents a boat equipped with all factory installed options, minus fuel.













PERFORMANCE-MINDED





# GS22

## SUPER AIR NAUTIQUE

Determined to please everyone who comes onboard, the GS22 is the definitive choice for those looking for a performance-minded multi-sport boat. With a hull that incorporates characteristics from the award-winning G23 Paragon and record-setting Ski Nautique, this multi-sport model can perform at high-levels whether it be waterskiing, wakesurfing or wakeboarding. Combine that high caliber performance with quality craftsmanship and attention to detail, and the GS22 is a luxurious multi-sport boat that fits into the lifestyle of any watersports family.

**LENGTH**

22' (6.70 m)

**DRAFT**

27.6" (0.70 m)

**DRY WEIGHT**

4,750 lbs (2,155 kg)

**HORSEPOWER**

400 / 355 / 450

**MAX CAPACITY**

15 People / 2,200 lbs (998 kg)

**BEAM**

100" (2.54 m)

**FUEL CAPACITY**

51 gal (193 l)

**MAX FACTORY BALLAST**

2,950 lbs (1,338 kg)

\*Dry weight represents a boat equipped with all factory installed options, minus fuel.



SUPER AIR NAUTIQUE GS22











100% ELECTRIC, 100% FUN





# GS22<sub>E</sub>

## SUPER AIR NAUTIQUE

A revolutionary model, the GS22E is the first 100% electric towboat that is unlike anything else in the world. Developed from a partnership with our sister company, Ingenuity Electric, the GS22E boasts the latest in electric marine technology with its unique and groundbreaking drivetrain. The award-winning system operates utilizing clean energy with zero emissions, without sacrificing any of the performance characteristics of our incredibly popular GS22 model. Ready for any activity on the water, the GS22E represents the present and future of electric wake boat propulsion.



**LENGTH**  
22' (6.70 m)

**DRAFT**  
27" (0.69 m)

**DRY WEIGHT**  
5,900 lbs (2,976 kg)

**MAX CAPACITY**  
11 People / 1,500 lbs (680 kg)

**BEAM**  
100" (2.54 m)

**MAX FACTORY BALLAST**  
1,850 lbs (839 kg)

**CHARGE TIME**  
AC: 10 hours at 240V / 50A  
DC: 4 hours at 25 kw  
SUPERCHARGER: 1.5 hours at 80 kw

**WATERSPORTS USE TIME**  
2-3 hours

\*Dry weight represents a boat equipped with all factory installed options.













DYNAMIC VERSATILITY





# GS20

## SUPER AIR NAUTIQUE

One of the most dynamic towboats on the water, the GS20 is up to the task of providing a multi-sport boat without compromise. With the ability to pull waterskiers, wakesurfers and wakeboarders at extremely high levels of performance, this versatile model has everything to make everyone in the family happy. With a hull that blends technology features from our Ski Nautique and G23, the GS20 provides world-class performance while also delivering the unmatched luxury you expect from a Nautique.

**LENGTH**

20' (6.10 m)

**DRAFT**

27" (0.69 m)

**DRY WEIGHT**

4,500 lbs (2,041 kg)

**HORSEPOWER**

400 / 355 / 450

**MAX CAPACITY**

12 People / 1,850 lbs (839 kg)

**BEAM**

100" (2.54 m)

**FUEL CAPACITY**

39 gal (147.6 l)

**MAX FACTORY BALLAST**

1,850 lbs (839 kg)

\*Dry weight represents a boat equipped with all factory installed options, minus fuel.



SUPER AIR NAUTIQUE GS20











# SKI NAUTIQUE SERIES

Ski Nautique | Ski Nautique 200

---

## A HISTORY LIKE NO OTHER

The boat that started it all for the Nautique brand, the Ski Nautique is an iconic name in the world of waterskiing. Breaking more world records and personal bests than any other ski boat, the legacy of the Ski Nautique and Ski Nautique 200 performance can be witnessed through the timeline of professional waterskiing. Whether you are pulling into the gates at 39-off or just out for a leisurely sunset ski, the Ski Nautique series has something to offer everyone.









SHAPED BY WORLD RECORDS





# SKI NAUTIQUE

## YOUR TICKET TO PERSONAL BESTS

Commanding the attention of any waterskier who seeks perfection, the Ski Nautique is the highest-performing waterski boat on the planet. As a world record-setting ski boat in multiple disciplines, the performance characteristics of the Ski Nautique are your ticket to setting a personal best. A blended carbon-fiber and fiberglass hull, along with the award-winning and patented MicroTuner technology delivers the softest wakes imaginable. All of this together with the running surface provides the best possible on-water experience for the driver, passengers and skiers who get to enjoy what over 60-years of development of the Ski Nautique has afforded.

**LENGTH**

20' (6.10 m)

**DRAFT**

21" (0.53 m)

**DRY WEIGHT**

2,945 lbs (1,336 kg)

**HORSEPOWER**

400 / 355 / 450

**MAX CAPACITY**

7 People / 1,450 lbs (658 kg)

**BEAM**

98" (2.49 m)

**FUEL CAPACITY**

29 gal (109.8 l)

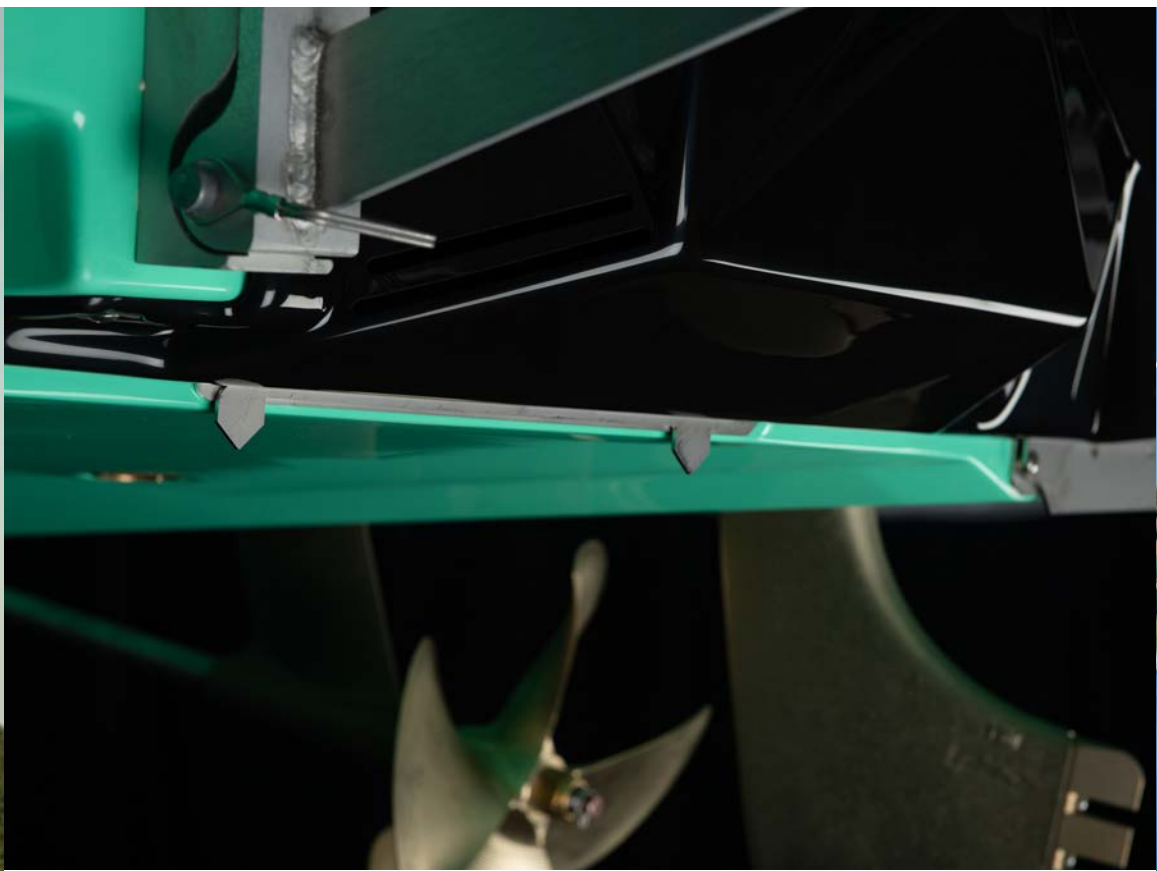
**MAX FACTORY BALLAST**

400 lbs (181.4 kg)

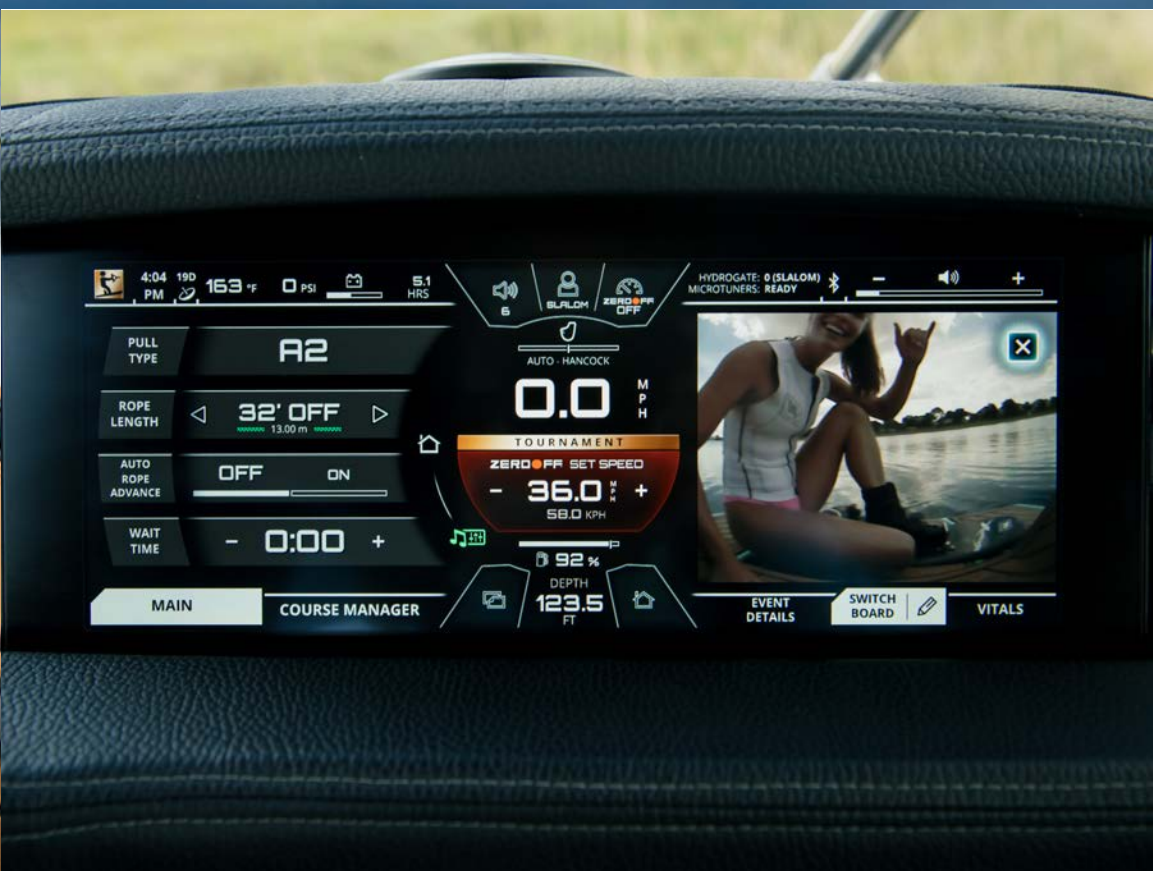
\*Dry weight represents a boat equipped with all factory installed options, minus fuel.













PERFORMANCE-OBSSESSED





# SKI NAUTIQUE 200

## READY FOR EVERYTHING

A creation based upon one of the most decorated hulls in waterski history, the Ski Nautique 200 is a performance-first model with the track record to back it up. An AWSA tournament-approved towboat, the Ski Nautique 200 produces soft wakes for all ages and abilities and speaks to the Nautique purist in all of us. Along with the high-end quality and world-class performance you expect out of a Nautique, the open bow design and user-friendly interior layout of the Ski Nautique 200 give you and your crew everything you need for fun-filled days on the water.

**LENGTH**

20' (6.10 m)

**DRAFT**

22" (0.56 m)

**DRY WEIGHT**

3,400 lbs (1,542 kg)

**HORSEPOWER**

400 / 355 / 450

**MAX CAPACITY**

9 People / 1,450 lbs (658 kg)

**BEAM**

95" (2.41 m)

**FUEL CAPACITY**

27 gal (102.1 l)

**MAX FACTORY BALLAST**

N/A

\*Dry weight represents a boat equipped with all factory installed options, minus fuel.













# IMMERSED IN SUPERIOR SOUND **JL AUDIO®**

---

## EXPERIENCE THE VERY BEST

We've teamed up with JL Audio to provide the best possible sound experience on all Nautique models. With incredible standard packages, there are also upgraded options depending on the boat model that can include JL Audio subwoofers, tower speakers, additional zone control and Nautique's exclusive JL WaveFront™ and WakeSub™ technology. Every Nautique has a JL Audio head unit that delivers perfectly clear sound to the JL Audio speakers onboard, all of which are powered by JL Audio amplifiers. Each element of our comprehensive JL Audio stereo system has been designed to perform seamlessly with one another to produce the best listening experience possible.









# PERFORMANCE AT THE HIGHEST LEVELS

---

## CHOOSE YOUR PROPULSION

When it comes time to choose your Nautique, you can feel comfortable knowing you have the best possible engine options available to you. We offer powerful, reliable performance with our gas engine offerings from our sister company, Pleasurecraft® Marine Engines (PCM), that provide you with outstanding performance day in and day out. You can also select our diesel offering on select Nautique models, with the powerful Yanmar Marine 8LV, or go with the 100% Electric GS22E powered by Ingenuity.







## PGM marine engines / GAS PROPULSION

**PCM ZZ8** – Built on the most powerful General Motors base engine ever offered for production, PCM harnesses this raw power with all the features that PCM is famous for. The ZZ8 offers the latest in direct-injection and supercharged technology providing efficiency and power not found from others. Incorporating 100% closed cooling and the next-generation, patented CXS catalyst system, the ZZ8 is the most advanced gasoline engine in the marine industry.

**HP: 600 / Displacement: 376 c.i.d. (6.2L) / Torque: 608 Ft-Lb**

**PCM ZZ6** – Incorporating the latest in General Motors direct-injection technology, along with the latest in PCM design, the ZZ6 has the performance and fuel efficiency that watersports enthusiasts desire.

**HP: 450 / Displacement: 376 c.i.d. (6.2L) / Torque: 465 Ft-Lb**

**PCM ZR7** – The ZR7 is 7.4 liters of pure, naturally-aspirated performance. Built from the same family as the ZR4, the ZR7 brings the reliability and durability to a whole new level of performance.

**HP: 475 / Displacement: 452 c.i.d. (7.4L) / Torque: 500 Ft-Lb**

**PCM ZZ5** – Incorporating the latest in General Motors direct-injection technology, along with the latest in PCM design, the ZZ5 has the power and fuel efficiency for a great day on the water.

**HP: 355 / Displacement: 325 c.i.d. (5.3L) / Torque: 405 Ft-Lb**

**PCM ZR4** – The PCM ZR4 is a proven engine with over a decade of outstanding performance. Upgraded with the Gen 2 CXS exhaust system as well as 100% closed cooling, the ZR4 is stronger than ever.

**HP: 400 / Displacement: 364 c.i.d. (6.0L) / Torque: 400 Ft-Lb**



## YANMAR / DIESEL PROPULSION

**8LV** – We're proud to offer a Yanmar diesel option for the G23 and G25 models. With high-torque output and an incredible power-to-weight ratio, this efficient turbo-charged diesel engine provides a more fuel-efficient option for those looking to keep RPM's low when fully loaded.

**HP: 370 / Displacement: 272 c.i.d. (4.5L) / Torque: 595 Ft-Lb**



## INGENITY / ELECTRIC PROPULSION

Available exclusively on the GS22E, Ingenuity's drive system is powered by a 100% electric motor that is powerful, compact, and reliable. With instant torque delivery straight to the prop, Ingenuity's electric system has optimized the drive dynamics for 2-3 hours of watersports use without compromising the performance of the boat.

**Peak Power: 220 kW / 296 HP / Continuous Power: 145 kW / 195 HP / Torque: 325 Ft-Lb**



# YOUR SALTWATER ADVENTURE AWAITS

G25P | G23P | G25 | G23 | G21 | S23 | GS24 | GS22 | GS20

---

## NAUTIQUE COASTAL EDITION

Whether you utilize your Nautique in a tropical paradise or an intra-coastal waterway, our Coastal Editions are designed to keep your Nautique ready for all of your saltwater adventures. A special package available on any Super Air Nautique model, the Coastal Edition includes more corrosion-resistant features throughout the boat than ever before and protects the vital parts from saltwater use. If you like to spend your on-water days by the coast, then the Nautique Coastal Edition is made for you.









# INTERIOR COLORS

			
MYSTIC WHITE	HAZE GREY	TUNGSTEN GREY	JET BLACK
			
SAHARA SAND	MOJAVE BROWN	VICTORY RED	CRIMSON RED
			
CRUSH ORANGE	CANARY YELLOW	GLO GREEN	EMERALD GREEN
			
STEEL BLUE	REEF BLUE	MASTERS BLUE	ADMIRAL BLUE
			
HAZE GREY TRUEWEAVE	MOJAVE BROWN TRUEWEAVE	TUNGSTEN GREY TRUEWEAVE	MYSTIC WHITE SOFTMAX
			
ANTHRACITE SOFTMAX	JET BLACK SOFTMAX		

# EXTERIOR COLORS

			
MYSTIC WHITE	HAZE GREY	TUNGSTEN GREY	JET BLACK
			
VICTORY RED	CRUSH ORANGE	CANARY YELLOW	GLO GREEN
			
REEF BLUE	MASTERS BLUE	ADMIRAL BLUE	ANTHRACITE METAL FLAKE
			
JET BLACK METAL FLAKE	MEDALLION METAL FLAKE	CRIMSON RED METAL FLAKE	VICTORY RED METAL FLAKE
			
EMERALD GREEN METAL FLAKE	STEEL BLUE METAL FLAKE	REEF BLUE METAL FLAKE	MASTERS BLUE METAL FLAKE
			
ADMIRAL BLUE METAL FLAKE	ION BLUE METAL FLAKE*		

\*Only available on the GS22e

















Nautique Boat Company, Inc.

14700 Aerospace Parkway • Orlando, Florida 32832 USA

800-346-2092 • 407-855-4141

**nautique.com**

Follow us at:

